



**CLARENDON RESIDENT MEETING
AUGUST 26, 2024**

Introductions

- Interpretation Needs (In person and Virtual)
- Clarendon Residents United + Legal
- Dellbrook Construction
- Somerville Housing Authority
- Housing Opportunities Unlimited
- POAH & SCC

Construction Updates

- Modular boxes started arriving in May. Level 3's stacking is ongoing. Expected completion of stacking modules in early January.
- Larger crane is in use as of 8/19. Breaking down the crane will have the same impact to parking when stacking is complete towards the end of the project.
- Framing of the amenity space is ongoing, which includes the lobby and residential lounge, mailroom and package area, offices, and community room. Plumbing, electrical, and HVAC work in the amenity space has started.
- Residents moving into Building E will be contacted towards the end of the year to prepare for lease-up.



Construction Timeline

- Demolition: 6 weeks (mid-May 23)
- Site & Foundations: 6 months (May-Nov 23)
- Concrete and Steel Podium: 5 months (Nov 23-April 24)
- Stacking of modular boxes: 7 months (June 24-Jan 25)
- Vertical construction: 14 months (Jan 24-March 25)
- Finish site work & landscaping: 8 months (July 24-March 25)
- Expected Completion: March 25
- Residential lease-up: 3 months (April-June 25)

Construction Reminders

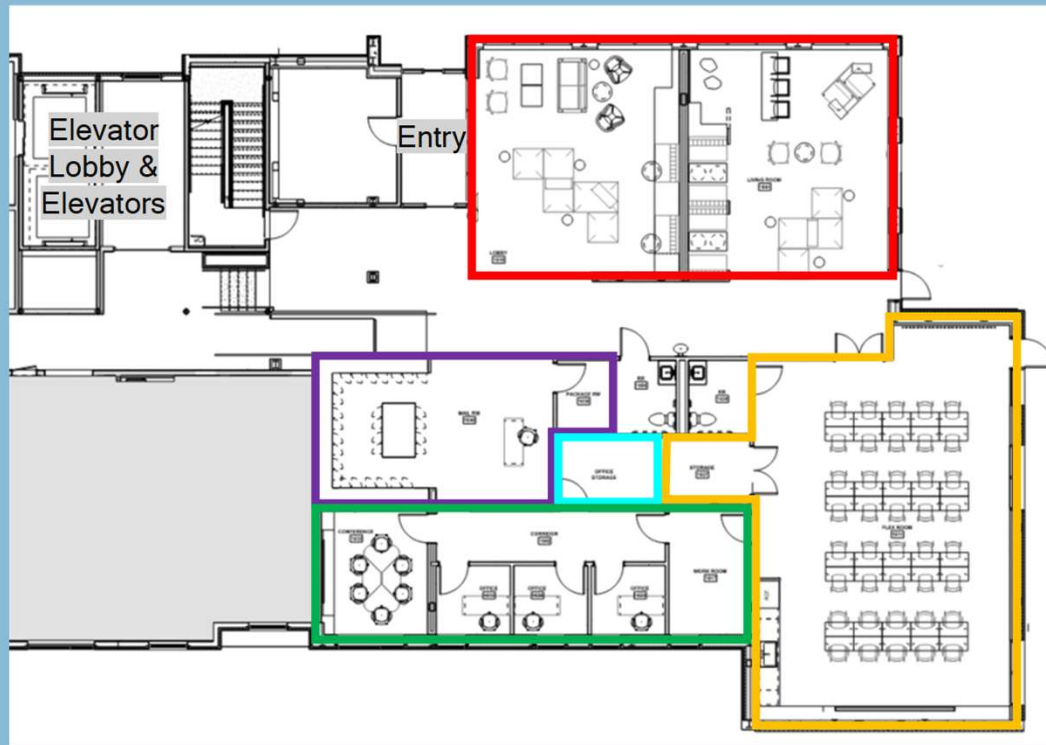
- Job applications available on the site fence
- Security cameras are live. Notices go to the construction team and police if someone trespasses

- Want construction updates?

Text: CLARENDONHILL
to 8447642012 to join our list



Building E Amenity Space Overview



Lobby & Residential Lounge

Mailroom and Package Area

CRU Office

Management Offices

Community Room

Phase 2: Park or Parking?



Phase 2: Park or Parking?



Upcoming Events

- **Next Construction Resident Meeting:**
Monday September 16th at 6:30pm
- **HOU is on site** Monday - Friday between
8:00AM and 4:00PM
- **SCC is on site** September 18th 9:00 to 11:00AM



Economic Opportunity



Scan this QR code for:

- **The First Source Jobs Program**
- **One-on-one Financial Literacy**
- **Learn how to buy a home**
- **Digital Literacy Classes**



Watch the work happen!

<https://app.oxblue.com/?openlink=poah/clarendon>



Questions? Please contact:

CRU: ClarendonResidentsUnited@gmail.com

Developers: mmiller@poah.org or asolis@somervillecdc.org

Relocation Specialist: kmarsh@housingopportunities.com

617-344-9616

Construction Page:

<https://clarendonhill.org/resident-info/construction-updates/>

MISC./REFERENCE SLIDES

Re-Occupancy, Relocation, and Phase 2 Updates

- Phase 2a funding has been received!
- As we near construction completion and prepare for Phase 2a, families will either move into the new building or move off site.
- HOU is working with residents eligible for 3BR units to plan for upcoming moves.
- HOU is on site Monday - Friday 8AM to 4PM to answer any relocation questions.
- SCC will be on site September 18th 9:00 to 11:00AM.



Phase I – Under construction

Phase 2a – Construction to begin after Phase I

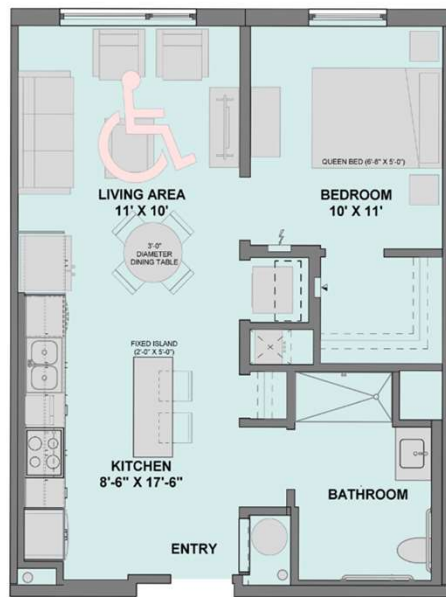
Phase 2b – On hold

Re-Occupancy Overview

1. Any household relocated off-site who received a notice to quit in a no-fault eviction
2. Priority households who are currently living in Phase II and had already moved once (Phase I relocatees)
3. Priority households who moved off site
4. Priority households who remained in place in Phase II buildings (Phase II priority households)
5. Non-priority households living in Phase II
6. Non-priority households relocated off-site

Building E Overview + Unit Plans

1-bedroom layouts



2 UNIT TYPE 1B - (1BR GROUP 2)
38' x 1'-0"



1 UNIT TYPE 1A - (1BR TYP.)
38' x 1'-0"

Building E Overview + Unit Plans

2-bedroom layouts (Slide 1 of 2)



④ UNIT TYPE 2E - (2BR CORNER)
38' x 17'-0"



⑤ UNIT TYPE 2C
38' x 17'-0"

Building E Overview + Unit Plans

2-bedroom layouts (Slide 1 of 2)



④ UNIT TYPE 2E - (2BR CORNER)
38' x 17'-0"



⑤ UNIT TYPE 2C
38' x 17'-0"

Building E Overview + Unit Plans

2-bedroom layouts (Slide 2 of 2)



1 UNIT TYPE 2A - (TYPICAL 2BR)
3/8" = 1'-0"



3 UNIT TYPE 2D - (2BR GROUP 2)
3/8" = 1'-0"

Building E Overview + Unit Plans

3-bedroom layouts



② UNIT TYPE 3A - (TYP. 3BR
CORNER-GROUP 1)
38' x 14'



② UNIT TYPE 3A - (TYP. 3BR
CORNER-GROUP 1)
38' x 14'