



**CLARENDON RESIDENT MEETING
DECEMBER 16, 2024**

Introductions

- Interpretation Needs (In person and Virtual)
- Clarendon Residents United + Legal
- Dellbrook Construction
- Somerville Housing Authority
- Housing Opportunities Unlimited
- POAH & SCC

Construction Updates

- Modular box stacking is up to Level 9. Expected completion of stacking in May.
 - Block 1 modules stacking to be completed this month.
 - Block 2 modules stacking started 12/4.
- Amenity space work is ongoing, which includes the lobby and residential lounge, mailroom and package area, offices, and community room. Plumbing work is signed off. Electrical and HVAC work is ongoing.
- Corridor MEP work is ongoing.
- Electrical gear inside building is tested and ready for Eversource to complete their work.



Construction Timeline

- Stacking of modular boxes: 9 months (June 24-March 25)
- Vertical construction: 16 months (Jan 24-May 25)
- Finish site work & landscaping: 10 months (July 24-May 25)
- Expected Completion: May 25
- Residential lease-up: 3 months (May-July 25)

Construction Reminders

- Job applications available on the site fence
- Security cameras are live. Notices go to the construction team and police if someone trespasses
- Want construction updates?

Text: CLARENDONHILL
to 8447642012 to join our list



Re-Occupancy, Relocation, and Phase 2 Updates

- Phase 2 funding has been received!
- As we near construction completion and prepare for Phase 2, families will either move into the new building or move off site.
- HOU is working with residents eligible for 3BR units to plan for upcoming moves.
- HOU is on site Monday - Friday 8AM to 4PM to answer any relocation questions.

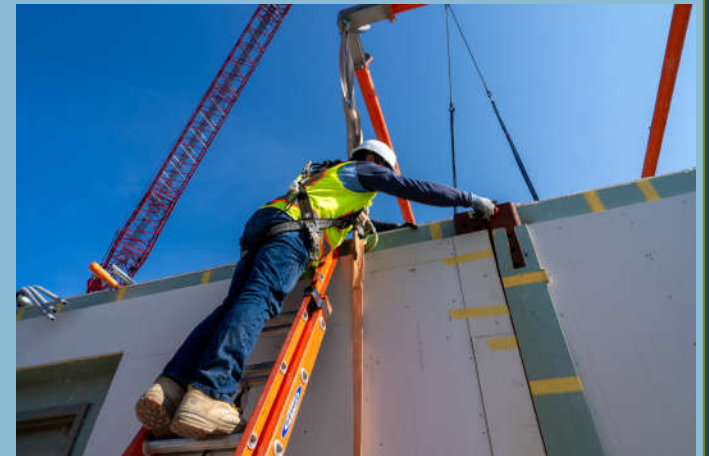


Re-Occupancy Overview

1. Any household relocated off-site who received a notice to quit in a no-fault eviction
2. Priority households who are currently living in Phase II and had already moved once (Phase I relocatees)
3. Priority households who moved off site
4. Priority households who remained in place in Phase II buildings (Phase II priority households)
5. Non-priority households living in Phase II
6. Non-priority households relocated off-site

Upcoming Events

- **Clarendon Hill Building E Tour:** Dec. 23 at 3:00PM
- **Next Construction Resident Meeting:**
January 13 at 6:30PM
- **Looking ahead through June 2025 Meetings:**
February 10, March 17, April 21, May 19,
June 23
- **HOU is on site:** Monday - Friday from 8:00AM to
4:00PM
- **SCC is on site:** January 9 from 9:00AM to
11:30AM
- **CRU Office Space:** 139 Alewife Brook Pkwy #17C



Economic Opportunity & Community Programs



Scan this QR code for:

- **Asset Building**
- **The Fist Source Jobs Program**
- **One-on-one Financial Literacy**
- **First Time Homebuyer Classes**
- **Digital Literacy Classes**



Digital Literacy

SCC Computer Lab

Computer Basics Classes

This class will teach you the basic skills needed to use a computer. You'll learn how to use a mouse and keyboard, email, Chrome, internet safety, and how to maintain a computer. **This free class lasts four weeks and runs monthly. Call, email, or use the link below to find current schedules.**

Microsoft Office Class

This intermediate level Microsoft Office class will teach you all you need to know about Microsoft Word, PowerPoint, Excel, and Outlook to succeed in the workplace. **This free class meets twice a week for six weeks. Call, email, or use the link below to find current schedules.**

Intermediate Workshops

Join our free workshops every Wednesday from 12-2 PM to explore intermediate computer skills like Microsoft Office and AI tools. **A flexible alternative to our Microsoft Office classes—contact us or use the link below for upcoming topics.**

537 Somerville Ave, Second Floor, Somerville, MA
www.somervillecdc.org

For more information, questions, or to register for a class or workshop, scan the QR code to the side, or contact **Cai Cronin** at (617) 410-9919 or ccroninesomervillecdc.org



SCC Computer Lab

Clases de Computación Básicas

Esta clase te enseñará las habilidades básicas para usar una computadora. Aprenderás a usar el mouse y teclado, correo electrónico, Chrome, seguridad en internet y cómo mantener una computadora. **Esta clase gratuita dura cuatro semanas. Llámamos, envíanos un correo electrónico o utiliza el enlace abajo para consultar los horarios actuales.**

Clase de Microsoft Office

Esta clase de nivel intermedio de Microsoft Office te enseñará todo lo que necesitas sobre Microsoft Word, PowerPoint, Excel y Outlook para triunfar en el ámbito laboral. Esta clase gratuita se reúne dos veces por semana durante seis semanas. **Llámamos, envíanos un correo electrónico o utiliza el enlace abajo para consultar los horarios actuales.**

Talleres Intermedios

Únete a nuestros talleres gratuitos todos los miércoles de 12 a 2 PM para explorar habilidades intermedias de computación, como Microsoft Office y herramientas de inteligencia artificial. Una alternativa flexible a nuestros clases de Microsoft Office. **Contactémos o utiliza el enlace abajo para conocer los próximos temas.**

537 Somerville Ave, Second Floor, Somerville, MA
www.somervillecdc.org

Para más información, preguntas o para inscribirte en una clase o taller, **escanea el código QR al lado o contacta a Cai Cronin** al (617) 410-9919 o a ccroninesomervillecdc.org.



Free Tech Support in Somerville

- Free Help Tech, Basic Computer Classes, Hotspot and Laptop(if eligible)
- Éd teknik ak kou Bazik sou Teknoloji Gratis, Hotspot ak Laptop(si ou eligib)
- Ayuda Técnica, Alfabetización Digital Gratis, Hotspot y Computadora Portátil(si es elegible)
- Ajuda Técnica, Alfabetização Digital Gratuito, Hotspot e Notebook(se elegível)

Check your eligibility here →



337 Somerville Ave, 2nd Floor



massdigitaljedi.org
1-888-551-2167
GetHelp@MassDigitalJEDI.org

"Collaboratively empowering communities through digital equity"

Career Coaching



FIRST SOURCE

PREPARACION DE TRABAJO

Preparar - Conectar - Crecer

Estamos dedicados a ayudar a cada participante en su búsqueda de empleo preparándolos, conectándolos y ayudándolos en su continuo crecimiento profesional.

Nuestros coach
**Athena, Olson y
Jonathan** están
deseando conocerte!



Regístrese
en línea



FIRST SOURCE

PREPARAÇÃO DE TRABALHO

Preparar - Conectar - Crescer

Dedicamo-nos a ajudar cada participante na sua procura/busca de emprego, preparando, conectando e auxiliando no seu crescimento profissional contínuo.

Os nossos coach
**Athena, Olson e
Jonathan** estão
ansiosos por
conhecê-lo.!



INSCREVA-
SE ON-
LINE!



FIRST SOURCE

JOB READINESS

Prepare - Connect - Grow

We are dedicated to assisting each participant with their job search by preparing, connecting and aiding in their continued professional growth.

Our coaches
**Athena, Olson and
Jonathan** are
looking forward to
meeting you!



SIGN UP
ONLINE!

SOBRE NOSOTROS !

El programa de trabajo First Source ayuda a los solicitantes de empleo a obtener las habilidades y la capacitación que necesitan para establecer un camino profesional que conduzca a empleos bien remunerados y crecimiento profesional, al mismo tiempo que brinda a los empleadores candidatos capacitados dentro de Somerville y las comunidades al rededor.

Ayudamos a los desempleados y subempleados a superar las barreras al empleo y apoyamos el desarrollo de habilidades de preparación para el trabajo mientras buscamos promover las oportunidades económicas.

somerillecd.org/first-source-jobs-intake-form/

NUESTROS SERVICIOS...

	PREPARAR
Currículum	Conocimiento básico de computación
Carta de Presentación	Preparación para entrevistas
	CONNECTAR
Clases de Inglés	Recursos en la comunidad
Entrenamiento de oficina/comercio	Empleadores
	CRECER
Como individuo, como profesional y como miembro de la comunidad, cada día es un nuevo día para oportunidades y éxito.	

617-410-9905 ext 2 firstsourceext@somerillecd.org Dirección: 337 Somerville Ave, Somerville MA 02143

SOBRE NÓS!

O programa de empregos First Source ajuda aos candidatos de emprego a obter as habilidades e o treinamento necessários para estabelecer um plano de carreira que leve a empregos bem remunerados e ao crescimento profissional, ao mesmo tempo que fornece aos empregadores candidatos qualificados a empregos em Somerville e nas comunidades vizinhas.

Ajudamos os desempregados e subempregados a ultrapassar barreiras ao emprego e apoiamos o desenvolvimento de competências de preparação para o trabalho, ao mesmo tempo que pretendemos promover oportunidades económicas.

somerillecd.org/first-source-jobs-intake-form/

NOSSOS SERVIÇOS...

	PREPARAR
Currículo	Noções básicas de informática
Cartas de Apresentação	Preparação para Entrevistas
	CONECTAR
Aulas de Inglês	Recursos comunitários
Treinamentos comerciais	Empregadores
	CRESCER
Como indivíduo, como profissional e como membro da comunidade. Cada dia é um novo dia para oportunidades.	

617-410-9905 ext 2 firstsourceext@somerillecd.org Endereço: 337 Somerville Ave, Somerville MA 02143

ABOUT US!

The First Source Jobs Programs helps local job seekers gain the skills and training they need to establish a career pathway leading to well-paying jobs and career growth while providing employers with qualified job candidates within Somerville and neighboring communities.

We help the unemployed and underemployed overcome barriers to employment and support job readiness skill development while aiming to advance economic opportunity.

somerillecd.org/first-source-jobs-intake-form/

OUR SERVICES...

	PREPARE
Resume	Basic Computer Understanding
Cover Letters	Interview Prep
	CONNECT
ESOL Classes	Community Resources
Trade Trainings	Employers Partner
	GROW
As an individual, as a professional and as a member of the community. Each day is a new day for opportunities and success.	

617-410-9905 firstsourceext@somerillecd.org 337 Somerville Ave, Somerville MA 02143

Career Coaching



Fall 2024 Career Fair

Contact us at:

Athena Mitchel (English)
amitchell@somervillecdc.org

Olson Regis (Haitian Creole & Spanish)
oregis@somervillecdc.org

Jonathan Francisque (Haitian Creole)
jfrancisque@somervillecdc.org

Watch the work happen!

<https://app.oxblue.com/?openlink=poah/clarendon>



Questions? Please contact:

CRU: ClarendonResidentsUnited@gmail.com

Developers: mmiller@poah.org or asolis@somervillecdc.org

Relocation Specialist: kmarsh@housingopportunities.com

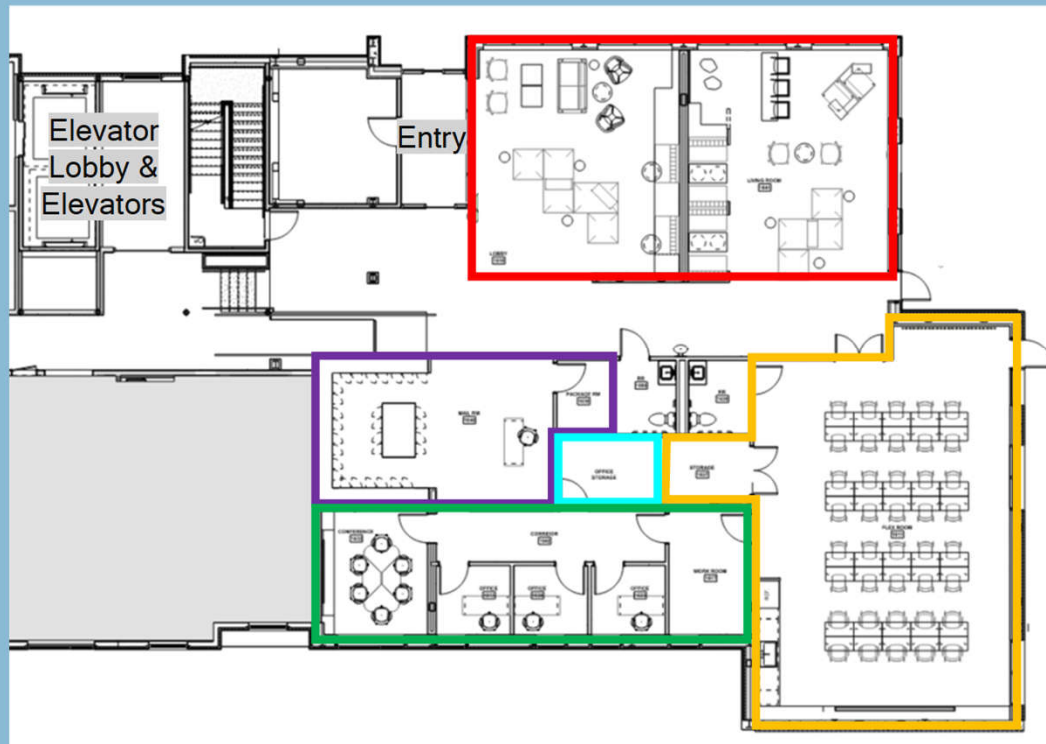
617-344-9616

Construction Page:

<https://clarendonhill.org/resident-info/construction-updates/>

MISC./REFERENCE SLIDES

Building E Amenity Space Overview



Lobby & Residential Lounge

Mailroom and Package Area

CRU Office

Management Offices

Community Room