



CLARENDON RESIDENT MEETING  
WEST SOMERVILLE NEIGHBORHOOD SCHOOL  
JULY 29, 2024

# Introductions

- Interpretation Needs (In person and Virtual)
- Clarendon Residents United + Legal
- Dellbrook Construction
- Somerville Housing Authority
- Housing Opportunities Unlimited
- POAH & SCC

# Construction Updates

- Deck slab placement is complete.
- Modular boxes started arriving in May and Dellbrook has begun stacking. Working with Lab9 to deliver more modules.
- Smaller mobile crane is being used to stack lower levels of modules.
- Currently targeting the set up of the large crane during the week of 8/5 for it to be ready the week of 8/12. Will send notices out to residents as soon as this is confirmed.



## Construction Timeline

- Demolition: 6 weeks (mid-May 23) – complete.
- Site & Foundations: 6 months (May-Nov 23) – complete.
- Concrete and Steel Podium: 5 months (Nov 23-April 24) – complete.
- Stacking of modular boxes: 6 months (June 24 – November 24)
- Vertical construction: 12 months (Jan 24 –Jan 25)
- Finish site work & landscaping: 6 months (July 24 - Jan 25)
- Expected Completion: March 2025

## Construction Reminders

- Job applications available on the site fence
- Security cameras are live. Notices go to the construction team and police if someone trespasses
  
- Want construction updates?

Text: CLARENDONHILL  
to 8447642012 to join our list



# Re-Occupancy, Relocation, and Phase 2 Updates

- Phase 2a funding has been received!
- As we near construction completion and prepare for Phase 2a, families will either move into the new building or move off site.
- HOU is working with residents eligible for 3BR units to plan for upcoming moves.
- HOU is on site Monday - Friday 8AM to 4PM to answer any relocation questions.
- SCC will be on site August 7<sup>th</sup> 9:30 to 11:30AM.



Phase I – Under construction

Phase 2a – Construction to begin after Phase I

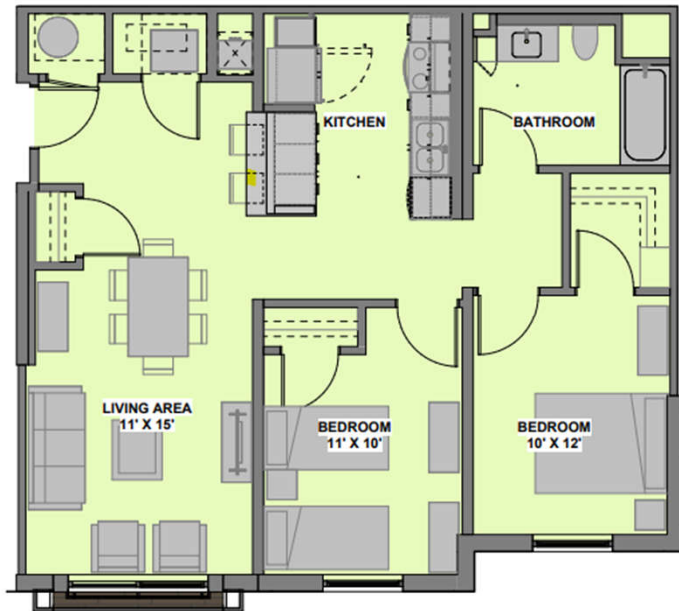
Phase 2b – On hold



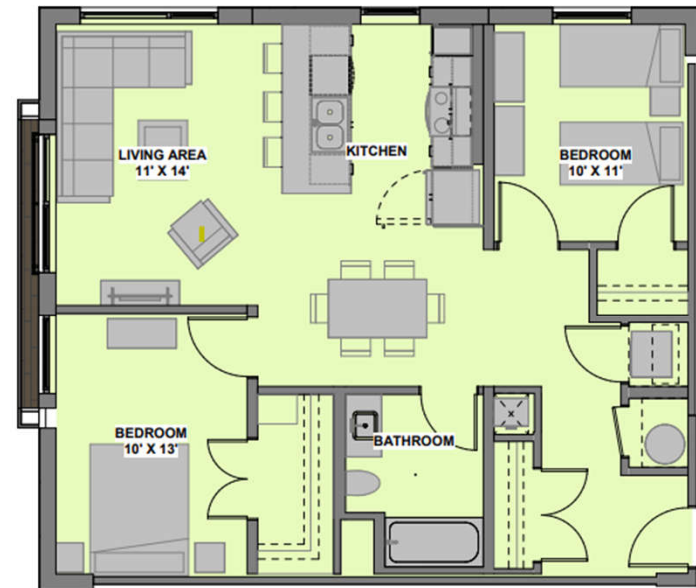
## Re-Occupancy Overview

1. Any household relocated off-site who received a notice to quit in a no-fault eviction
2. Priority households who are currently living in Phase II and had already moved once (Phase I relocatees)
3. Priority households who moved off site
4. Priority households who remained in place in Phase II buildings (Phase II priority households)
5. Non-priority households living in Phase II
6. Non-priority households relocated off-site

# Building E Overview + Unit Plans



5 UNIT TYPE 2C  
3/8" = 1'-0"



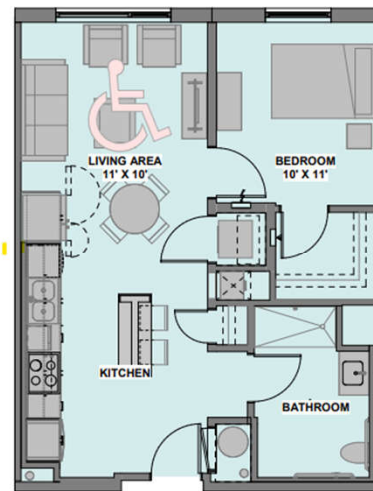
4 UNIT TYPE 2B - (2BR CORNER)  
3/8" = 1'-0"



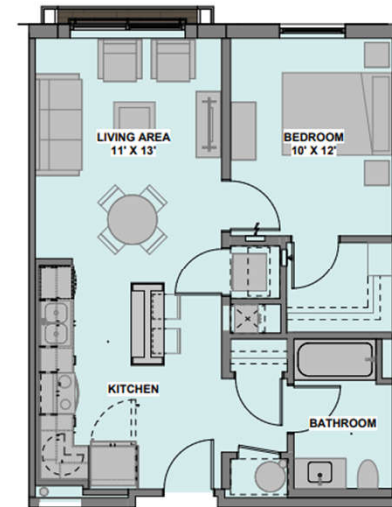
# Building E Overview + Unit Plans



3 UNIT TYPE 2A - (TYPICAL 2BR)  
33' x 11'

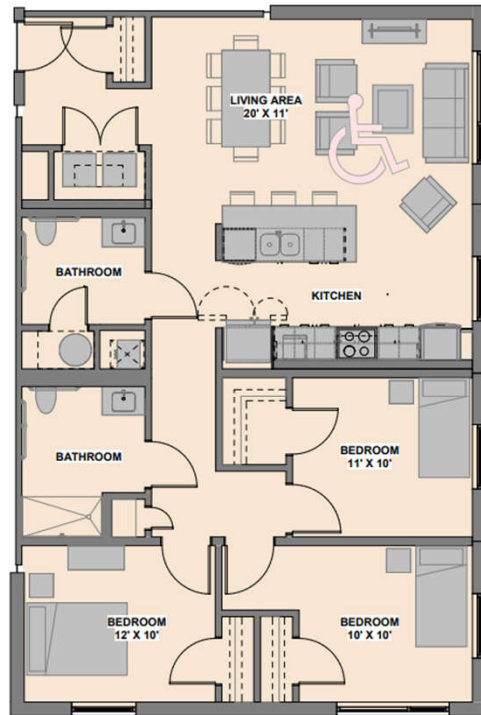


2 UNIT TYPE 1B - (1BR GROUP 2)  
33' x 11'

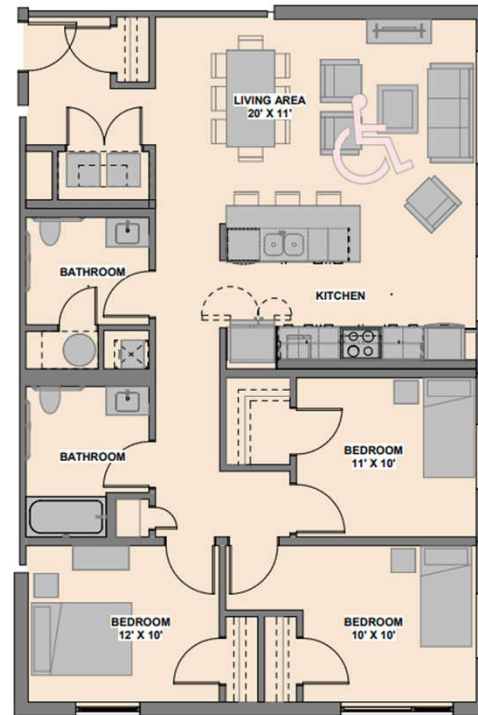


1 UNIT TYPE 1A - (1BR TYP.)  
33' x 11'

# Building E Overview + Unit Plans

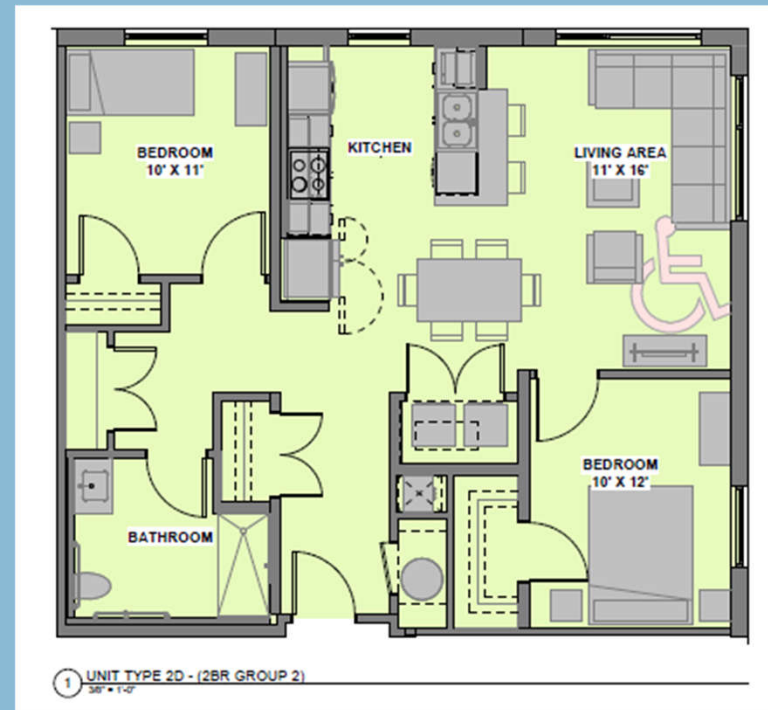
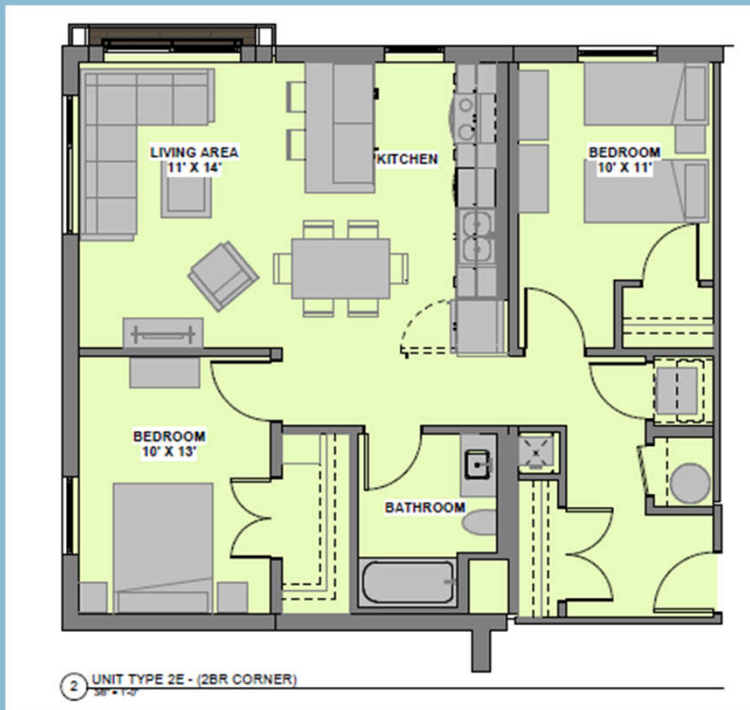


4 UNIT TYPE 3B - (3BR GROUP 2)  
3/8" = 1'-0"



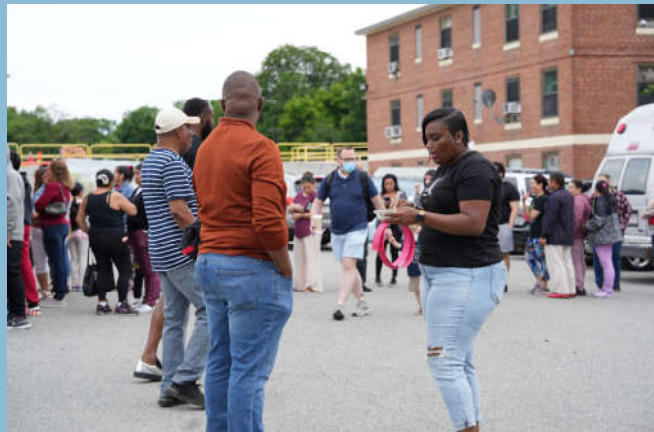
3 UNIT TYPE 3A - (TYP. 3BR  
CORNER-GROUP 1)  
3/8" = 1'-0"

# Building E Overview + Unit Plans



# Upcoming Events

- **Next Construction Resident Meeting:**  
Monday August 19<sup>th</sup> at 6:30pm
- **HOU is on site** Monday - Friday between  
8:00AM and 4:00PM
- **SCC is on site** August 7<sup>th</sup> 9:30 to 11:30AM



# Economic Opportunity



**Scan this QR code for:**

- **The Fist Source Jobs Program**
- **One-on-one Financial Literacy**
- **Learn how to buy a home**
- **Digital Literacy Classes**





# Watch the work happen!

<https://app.oxblue.com/?openlink=poah/clarendon>





**Questions? Please contact:**

**CRU: ClarendonResidentsUnited@gmail.com**

**Developers: mmiller@poah.org or asolis@somervillecdc.org**

**Relocation Specialist: bcapretti@housingopportunities.com  
(617) 655-6621**

**Construction Page:**

**<https://clarendonhill.org/resident-info/construction-updates/>**

