



**CLARENDON RESIDENT MEETING
NOVEMBER 18, 2024**

Introductions

- Interpretation Needs (In person and Virtual)
- Clarendon Residents United + Legal
- Dellbrook Construction
- Somerville Housing Authority
- Housing Opportunities Unlimited
- POAH & SCC

Construction Updates

- Modular box stacking is up to Level 9. Expected completion of stacking in May.
 - Block 1 modules expected completion by 12/6.
 - Block 2 modules expected to start week of 12/9.
- Amenity space work is ongoing, which includes the lobby and residential lounge, mailroom and package area, offices, and community room. Plumbing work is signed off. Electrical and HVAC work is ongoing.
- Corridor MEP work has started.
- Electrical gear inside building is tested and ready for Eversource to complete their work.



Construction Timeline

- Stacking of modular boxes: 9 months (June 24-March 25)
- Vertical construction: 16 months (Jan 24-May 25)
- Finish site work & landscaping: 10 months (July 24-May 25)
- Expected Completion: May 25
- Residential lease-up: 3 months (May-July 25)

Construction Reminders

- Job applications available on the site fence
- Security cameras are live. Notices go to the construction team and police if someone trespasses
- Want construction updates?

Text: CLARENDONHILL
to 8447642012 to join our list



Re-Occupancy, Relocation, and Phase 2 Updates

- Phase 2a funding has been received!
- As we near construction completion and prepare for Phase 2a, families will either move into the new building or move off site.
- HOU is working with residents eligible for 3BR units to plan for upcoming moves.
- HOU is on site Monday - Friday 8AM to 4PM to answer any relocation questions.



Re-Occupancy Overview

1. Any household relocated off-site who received a notice to quit in a no-fault eviction
2. Priority households who are currently living in Phase II and had already moved once (Phase I relocatees)
3. Priority households who moved off site
4. Priority households who remained in place in Phase II buildings (Phase II priority households)
5. Non-priority households living in Phase II
6. Non-priority households relocated off-site

Upcoming Events

- **Next Construction Resident Meeting:**
Monday December 16th at 6:30pm
- **HOU is on site** Monday - Friday between
8:00AM - 4:00PM
- **SCC is on site:**
 - December 12th 9:00 AM to 11:30 AM



Economic Opportunity & Community Programs



Scan this QR code for:

- **Asset Building**
- **The First Source Jobs Program**
- **One-on-one Financial Literacy**
- **Learn how to buy a home**
- **Digital Literacy Classes**



Digital Literacy

Somerville Community Corporation



COMPUTER BASICS CLASSES

337 Somerville Ave, 2nd Floor, Somerville MA

- 10/8/24 11:00-1:00 Learn basic computer controls and parts
- 10/15/24 11:00-1:00 Learn Google and internet browsers
- 10/22/24 11:00-1:00 Learn email
- 10/29/24 11:00-1:00 Learn how to maintain a computer

www.somervillecdc.org



Scan here to register OR call or email here → ccronin@somervillecdc.org 617-410-9919

Somerville Community Corporation



KOU ENFOMATIK DE BAZ

337 Somerville Ave, 2nd Floor, Somerville MA

- 8/10/24 2:30-4:30 Enfòmatrik bazik, kontwòl ak konpozan yo
- 15/10/24 2:30-4:30 Aprann itilize Google ak entènèt
- 22/10/24 2:30-4:30 Apran kijan pou jere lmel ou
- 29/10/24 2:30-4:30 Aprann fè antretyen òdinatè

www.somervillecdc.org



Scan here to register OR call or email here → ccronin@somervillecdc.org 617-410-9919

Somerville Community Corporation



CURSO BÁSICO EN INFORMÁTICA

337 Somerville Ave, 2nd Floor, Somerville MA

- 16/10/24 10:00-12:00 Aprender la computación básica
- 23/10/24 10:00-12:00 Entender como usar Google e internet
- 30/10/24 10:00-12:00 Enviar y recibir correo electrónico
- 6/11/24 10:00-12:00 Saber como mantener una computadora

www.somervillecdc.org



Escanear aqui para registrarse O llamar y escribir aqui → ccronin@somervillecdc.org 617-410-9919

Career Coaching



FIRST SOURCE

PREPARACION DE TRABAJO

Preparar - Conectar - Crecer

Estamos dedicados a ayudar a cada participante en su búsqueda de empleo preparándolos, conectándolos y ayudándolos en su continuo crecimiento profesional.

SOBRE NOSOTROS !

El programa de trabajo First Source ayuda a los solicitantes de empleo a obtener las habilidades y la capacitación que necesitan para establecer un camino profesional que conduzca a empleos bien remunerados y crecimiento profesional, al mismo tiempo que brinda a los empleadores candidatos capacitados dentro de Somerville y las comunidades al rededor.

Ayudamos a los desempleados y subempleados a superar las barreras al empleo y apoyamos el desarrollo de habilidades de preparación para el trabajo mientras buscamos promover las oportunidades económicas.

sommervillecdc.org/first-source-jobs-intake-form/

617-410-9905 ext 2 firstsourceext@sommervillecdc.org

Dirección:
337 Somerville Ave,
Somerville MA 02143

Nuestros coach
**Athena, Olson y
Jonathan** están
deseando conocerte!



NUESTROS SERVICIOS...

	PREPARAR Currículum Conocimiento básico de computación Carta de Presentación Preparación para entrevistas
	CONNECTAR Clases de inglés Recursos en la comunidad Entrenamiento de oficio/comercio Empleadores
	CRECER Como individuo, como profesional y como miembro de la comunidad, cada día es un nuevo día para oportunidades y éxito.



FIRST SOURCE

PREPARAÇÃO DE TRABALHO

Preparar - Conectar - Crescer

Dedicamo-nos a ajudar cada participante na sua procura/busca de emprego, preparando, conectando e auxiliando no seu crescimento profissional contínuo.

SOBRE NÓS!

O programa de empregos First Source ajuda aos candidatos de emprego a obter as habilidades e o treinamento necessários para estabelecer um plano de carreira que leve a empregos bem remunerados e ao crescimento profissional, ao mesmo tempo que fornece aos empregadores candidatos qualificados a empregos em Somerville e nas comunidades vizinhas.

Ajudamos os desempregados e subempregados a ultrapassar barreiras ao emprego e apoiamos o desenvolvimento de competências de preparação para o trabalho, ao mesmo tempo que pretendemos promover oportunidades económicas.

sommervillecdc.org/first-source-jobs-intake-form/

617-410-9905 ext 2 firstsourceext@sommervillecdc.org

Endereço:
337 Somerville Ave,
Somerville MA 02143

Os nossos coach
**Athena, Olson e
Jonathan** estão
ansiosos por
conhecê-lo.!



NOSSOS SERVIÇOS...

	PREPARAR Currículo Noções básicas de informática Cartas de Apresentação Preparação para Entrevistas
	CONECTAR Aulas de Inglês Recursos comunitários Treinamentos comerciais Empregadores
	CRECER Como indivíduo, como profissional e como membro da comunidade. Cada dia é um novo dia para oportunidades.



FIRST SOURCE

JOB READINESS

Prepare - Connect - Grow

We are dedicated to assisting each participant with their job search by preparing, connecting and aiding in their continued professional growth.

ABOUT US!

The First Source Jobs Programs helps local job seekers gain the skills and training they need to establish a career pathway leading to well-paying jobs and career growth while providing employers with qualified job candidates within Somerville and neighboring communities.

We help the unemployed and underemployed overcome barriers to employment and support job readiness skill development while aiming to advance economic opportunity.

sommervillecdc.org/first-source-jobs-intake-form/

617-410-9905 firstsourceext@sommervillecdc.org

337 Somerville Ave,
Somerville MA 02143

Our coaches
**Athena, Olson and
Jonathan** are
looking forward to
meeting you!



OUR SERVICES...

	PREPARE Resume Basic Computer Understanding Cover Letters Interview Prep
	CONNECT ESOL Classes Community Resources Trade Trainings Employers Partner
	GROW As an individual, as a professional and as a member of the community. Each day is a new day for opportunities and success.

Career Coaching



Fall 2024 Career Fair

Contact us at:

Athena Mitchel (English)
amitchell@somervillecdc.org

Olson Regis (Haitian Creole & Spanish)
oregis@somervillecdc.org

Jonathan Francisque (Haitian Creole)
jfrancisque@somervillecdc.org

Watch the work happen!

<https://app.oxblue.com/?openlink=poah/clarendon>



November 18th, 10:40am

Questions? Please contact:

CRU: ClarendonResidentsUnited@gmail.com

Developers: mmiller@poah.org or asolis@somervillecdc.org

Relocation Specialist: kmarsh@housingopportunities.com

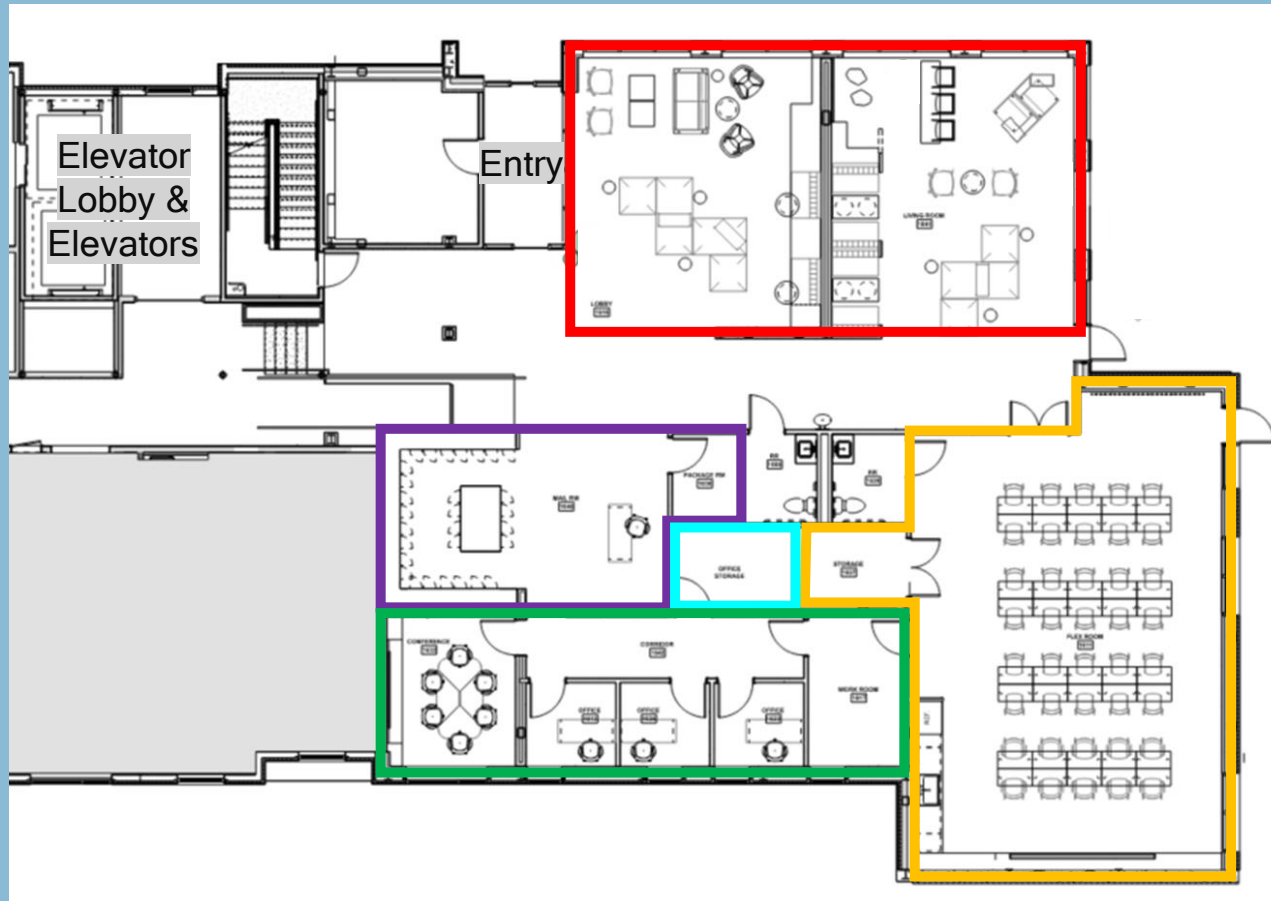
617-344-9616

Construction Page:

<https://clarendonhill.org/resident-info/construction-updates/>

MISC./REFERENCE SLIDES

Building E Amenity Space Overview



Lobby & Residential Lounge

Mailroom and Package Area

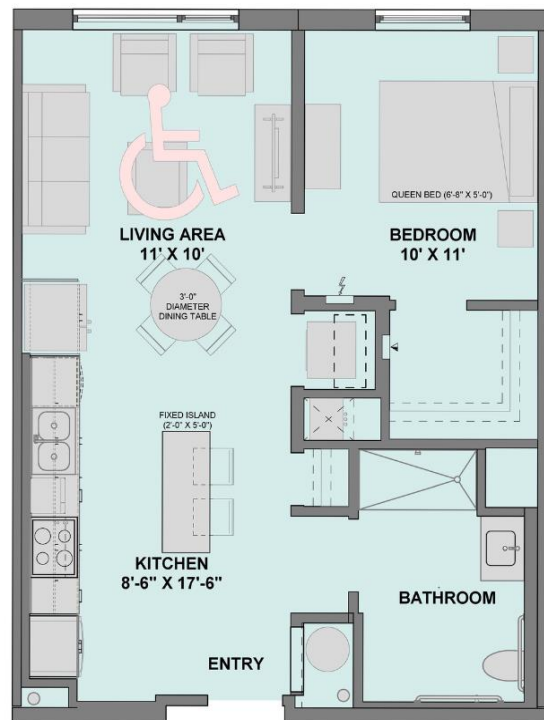
CRU Office

Management Offices

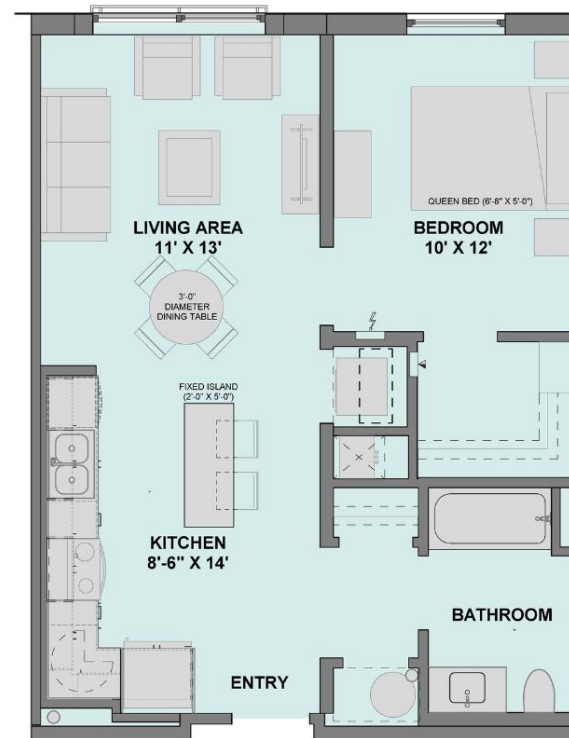
Community Room

Building E Overview + Unit Plans

1-bedroom layouts



2 UNIT TYPE 1B - (1BR GROUP 2)
3/8" = 1'-0"



1 UNIT TYPE 1A - (1BR TYP.)
3/8" = 1'-0"

Building E Overview + Unit Plans

2-bedroom layouts (Slide 1 of 2)



4 UNIT TYPE 2E - (2BR CORNER)
3/8" = 1'-0"



5 UNIT TYPE 2C
3/8" = 1'-0"

Building E Overview + Unit Plans

2-bedroom layouts (Slide 1 of 2)



4 UNIT TYPE 2E - (2BR CORNER)
3/8" = 1'-0"



5 UNIT TYPE 2C
3/8" = 1'-0"

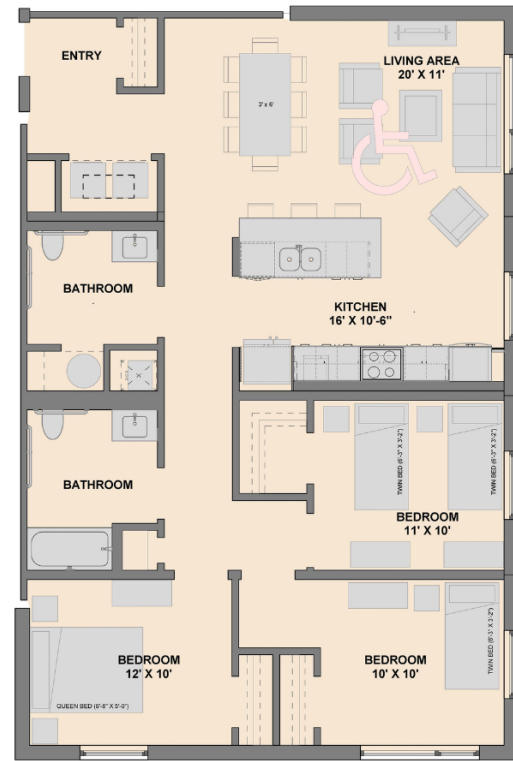
Building E Overview + Unit Plans

2-bedroom layouts (Slide 2 of 2)



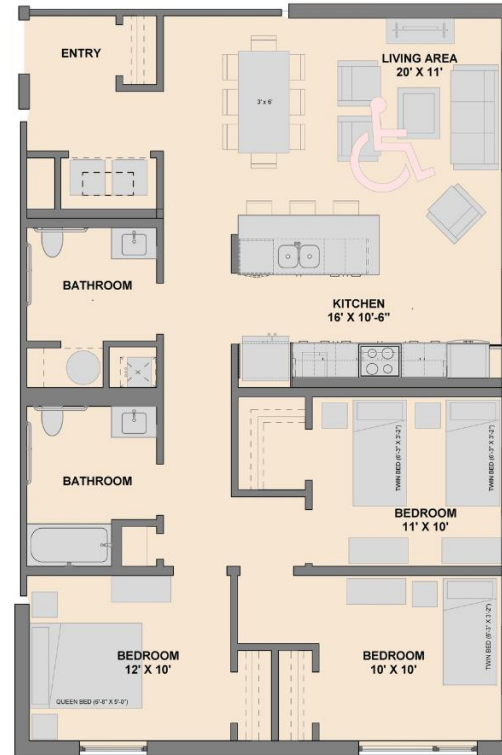
Building E Overview + Unit Plans

3-bedroom layouts



2 UNIT TYPE 3A - (TYP. 3BR
CORNER-GROUP 1)

3/8" = 1'-0"



2 UNIT TYPE 3A - (TYP. 3BR
CORNER-GROUP 1)

3/8" = 1'-0"