



**CLARENDON RESIDENT MEETING  
OCTOBER 28, 2024**

# Introductions

- Interpretation Needs (In person and Virtual)
- Clarendon Residents United + Legal
- Dellbrook Construction
- Somerville Housing Authority
- Housing Opportunities Unlimited
- POAH & SCC

# Construction Updates

- Modular boxes started arriving in May, and stacking is currently up to level 7. Expected completion of stacking modules in March.
- Framing of the amenity space is ongoing, which includes the lobby and residential lounge, mailroom and package area, offices, and community room. Plumbing, electrical, and HVAC work in the amenity space has started. Exterior sheathing is also ongoing, and exterior windows are expected to be installed mid-December.
- Corridor MEP work has started.
- Garage-level windows are expected to be installed in November.



## **Construction Timeline**

- Stacking of modular boxes: 9 months (June 24-March 25)
- Vertical construction: 14 months (Jan 24-March 25)
- Finish site work & landscaping: 8 months (July 24-March 25)
- Expected Completion: May 25
- Residential lease-up: 3 months (May-July 25)

## Construction Reminders

- Job applications available on the site fence
- Security cameras are live. Notices go to the construction team and police if someone trespasses
- Want construction updates?

Text: CLARENDONHILL  
to 8447642012 to join our list



# Re-Occupancy, Relocation, and Phase 2 Updates

- Phase 2a funding has been received!
- As we near construction completion and prepare for Phase 2a, families will either move into the new building or move off site.
- HOU is working with residents eligible for 3BR units to plan for upcoming moves.
- HOU is on site Monday - Friday 8AM to 4PM to answer any relocation questions.



Phase I – Under construction

Phase 2a – Construction to begin after Phase I

Phase 2b – On hold

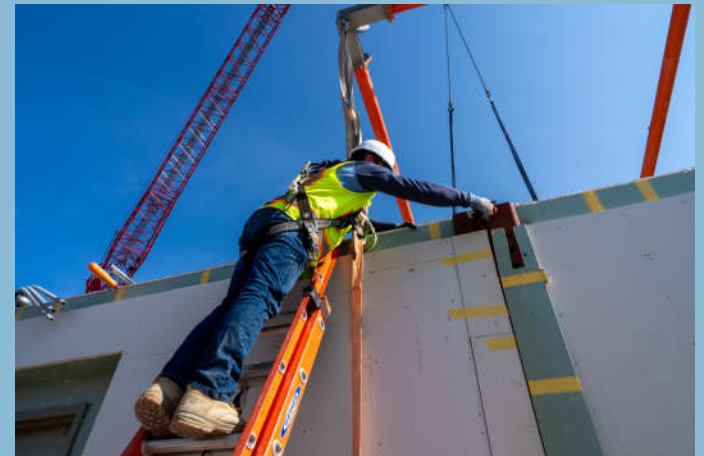
## Re-Occupancy Overview

1. Any household relocated off-site who received a notice to quit in a no-fault eviction
2. Priority households who are currently living in Phase II and had already moved once (Phase I relocatees)
3. Priority households who moved off site
4. Priority households who remained in place in Phase II buildings (Phase II priority households)
5. Non-priority households living in Phase II
6. Non-priority households relocated off-site



# Upcoming Events

- **Next Construction Resident Meeting:**  
Monday November 18<sup>th</sup> at 6:30pm
- **HOU is on site** Monday - Friday between  
8:00AM - 4:00PM
- **SCC is on site:**
  - Thursday October 31<sup>st</sup> 11:00AM- 1:00PM
  - November 13<sup>th</sup> 9:00 AM to 11:00 AM





# Economic Opportunity & Community Programs



**Scan this QR code for:**

- **Asset Building**
- **The Fist Source Jobs Program**
- **One-on-one Financial Literacy**
- **Learn how to buy a home**
- **Digital Literacy Classes**



# Digital Literacy

Somerville Community Corporation



## COMPUTER BASICS CLASSES

337 Somerville Ave, 2nd Floor,  
Somerville MA

- 10/8/24 11:00-1:00 Learn basic computer controls and parts
- 10/15/24 11:00-1:00 Learn Google and internet browsers
- 10/22/24 11:00-1:00 Learn email
- 10/29/24 11:00-1:00 Learn how to maintain a computer

[www.somervillecdc.org](http://www.somervillecdc.org)



Scan here to register  
OR

617-410-9919

call or email here → [ccronin@somervillecdc.org](mailto:ccronin@somervillecdc.org)

Somerville Community Corporation



## KOU ENFOMATIK DE BAZ

337 Somerville Ave, 2nd Floor,  
Somerville MA

- 8/10/24 2:30-4:30 Enfòmatrik bazik, kontwòl ak konpozan yo
- 15/10/24 2:30-4:30 Aprann itilize Google ak entènèt
- 22/10/24 2:30-4:30 Apran kijan pou jere Imel ou
- 29/10/24 2:30-4:30 Aprann fè antretyen òdinatè

[www.somervillecdc.org](http://www.somervillecdc.org)



Scan here to register  
OR

617-410-9919

call or email here → [ccronin@somervillecdc.org](mailto:ccronin@somervillecdc.org)

Somerville Community Corporation



## CURSO BÁSICO EN INFORMÁTICA

337 Somerville Ave, 2nd Floor,  
Somerville MA

- 16/10/24 10:00-12:00 Aprender la computación básica
- 23/10/24 10:00-12:00 Entender como usar Google e internet
- 30/10/24 10:00-12:00 Enviar y recibir correo electrónico
- 6/11/24 10:00-12:00 Saber como mantener una computadora

[www.somervillecdc.org](http://www.somervillecdc.org)



Escanear aqui para registrarse  
O

617-410-9919

llamar y escribir aqui → [ccronin@somervillecdc.org](mailto:ccronin@somervillecdc.org)

# Career Coaching



## FIRST SOURCE

PREPARACION DE TRABAJO

Preparar - Conectar - Crecer

Estamos dedicados a ayudar a cada participante en su búsqueda de empleo preparándolos, conectándolos y ayudándolos en su continuo crecimiento profesional.

Nuestros coach  
**Athena, Olson y  
Jonathan** están  
deseando conocerte!



Regístrese  
en línea



## FIRST SOURCE

PREPARAÇÃO DE TRABALHO

Preparar - Conectar - Crescer

Dedicamo-nos a ajudar cada participante na sua procura/busca de emprego, preparando, conectando e auxiliando no seu crescimento profissional contínuo.

Os nossos coach  
**Athena, Olson e  
Jonathan** estão  
ansiosos por  
conhecê-lo.!



INSCREVA-  
SE ON-  
LINE!



## FIRST SOURCE

JOB READINESS

Prepare - Connect - Grow

We are dedicated to assisting each participant with their job search by preparing, connecting and aiding in their continued professional growth.

Our coaches  
**Athena, Olson and  
Jonathan** are  
looking forward to  
meeting you!



SIGN UP  
ONLINE!

### SOBRE NOSOTROS !

El programa de trabajo First Source ayuda a los solicitantes de empleo a obtener las habilidades y la capacitación que necesitan para establecer un camino profesional que conduzca a empleos bien remunerados y crecimiento profesional, al mismo tiempo que brinda a los empleadores candidatos capacitados dentro de Somerville y las comunidades al rededor.

Ayudamos a los desempleados y subempleados a superar las barreras al empleo y apoyamos el desarrollo de habilidades de preparación para el trabajo mientras buscamos promover las oportunidades económicas.

[somerillecdc.org/first-source-jobs-intake-form/](http://somerillecdc.org/first-source-jobs-intake-form/)

### NUESTROS SERVICIOS...

**PREPARAR**  
Currículum    Conocimiento básico de computación  
Carta de Presentación    Preparación para entrevistas

**CONNECTAR**  
Clases de Inglés    Recursos en la comunidad  
Entrenamiento de oficio/comercio    Empleadores

**CRECER**  
Como individuo, como profesional y como miembro de la comunidad, cada día es un nuevo día para oportunidades y éxito.

617-410-9905 ext 2    [firstsourceext@somervillecdc.org](mailto:firstsourceext@somervillecdc.org)    Dirección:  
337 Somerville Ave,  
Somerville MA 02143

### SOBRE NÓS!

O programa de empregos First Source ajuda aos candidatos de emprego a obter as habilidades e o treinamento necessários para estabelecer um plano de carreira que leve a empregos bem remunerados e ao crescimento profissional, ao mesmo tempo que fornece aos empregadores candidatos qualificados a empregos em Somerville e nas comunidades vizinhas.

Ajudamos os desempregados e subempregados a ultrapassar barreiras ao emprego e apoiamos o desenvolvimento de competências de preparação para o trabalho, ao mesmo tempo que pretendemos promover oportunidades económicas.

[somerillecdc.org/first-source-jobs-intake-form/](http://somerillecdc.org/first-source-jobs-intake-form/)

### NOSSOS SERVIÇOS...

**PREPARAR**  
Currículo    Noções básicas de informática  
Cartas de Apresentação    Preparação para Entrevistas

**CONECTAR**  
Aulas de Inglês    Recursos comunitários  
Treinamentos comerciais    Empregadores

**CRESCER**  
Como indivíduo, como profissional e como membro da comunidade. Cada dia é um novo dia para oportunidades.

617-410-9905 ext 2    [firstsourceext@somervillecdc.org](mailto:firstsourceext@somervillecdc.org)    Endereço:  
337 Somerville Ave,  
Somerville MA 02143

### ABOUT US!

The First Source Jobs Programs helps local job seekers gain the skills and training they need to establish a career pathway leading to well-paying jobs and career growth while providing employers with qualified job candidates within Somerville and neighboring communities.

We help the unemployed and underemployed overcome barriers to employment and support job readiness skill development while aiming to advance economic opportunity.

[somerillecdc.org/first-source-jobs-intake-form/](http://somerillecdc.org/first-source-jobs-intake-form/)

### OUR SERVICES...

**PREPARE**  
Resume    Basic Computer Understanding  
Cover Letters    Interview Prep

**CONNECT**  
ESOL Classes    Community Resources  
Trade Trainings    Employers Partner

**GROW**  
As an individual, as a professional and as a member of the community. Each day is a new day for opportunities and success.

617-410-9905    [firstsourceext@somervillecdc.org](mailto:firstsourceext@somervillecdc.org)    337 Somerville Ave,  
Somerville MA 02143

# Career Coaching



Fall 2024 Career Fair

**Contact us at:**

**Athena Mitchel (English)**  
**[amitchell@somervillecdc.org](mailto:amitchell@somervillecdc.org)**

**Olson Regis (Haitian Creole & Spanish)**  
**[oregis@somervillecdc.org](mailto:oregis@somervillecdc.org)**

**Jonathan Francisque (Haitian Creole)**  
**[jfrancisque@somervillecdc.org](mailto:jfrancisque@somervillecdc.org)**



# Watch the work happen!

<https://app.oxblue.com/?openlink=poah/clarendon>



**Questions? Please contact:**

**CRU: ClarendonResidentsUnited@gmail.com**

**Developers: mmiller@poah.org or asolis@somervillecdc.org**

**Relocation Specialist: kmarsh@housingopportunities.com**

**617-344-9616**

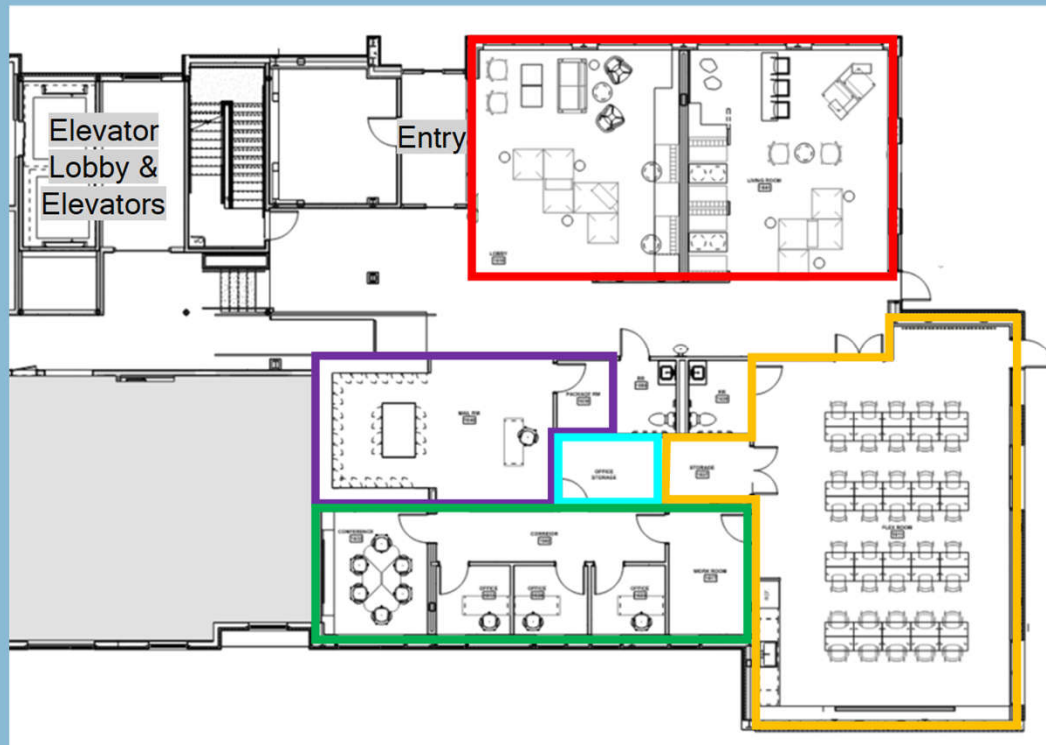
**Construction Page:**

**<https://clarendonhill.org/resident-info/construction-updates/>**



MISC./REFERENCE SLIDES

# Building E Amenity Space Overview



Lobby & Residential Lounge

Mailroom and Package Area

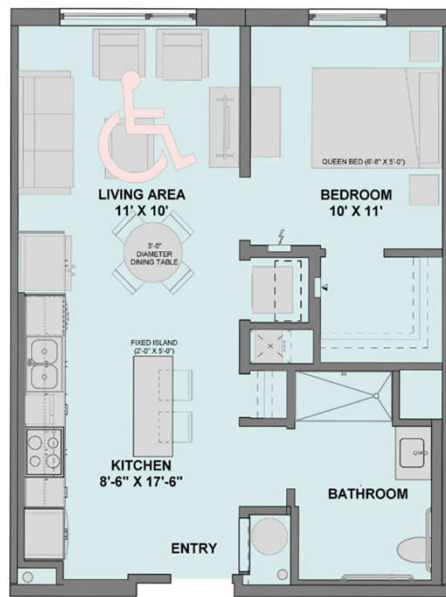
CRU Office

Management Offices

Community Room

# Building E Overview + Unit Plans

## *1-bedroom layouts*



2 UNIT TYPE 1B - (1BR GROUP 2)  
3/8" = 1'-0"



1 UNIT TYPE 1A - (1BR TYP.)  
3/8" = 1'-0"

# Building E Overview + Unit Plans

*2-bedroom layouts (Slide 1 of 2)*



4 UNIT TYPE 2E - (2BR CORNER)  
38' x 14'



5 UNIT TYPE 2C  
38' x 14'

# Building E Overview + Unit Plans

*2-bedroom layouts (Slide 1 of 2)*



④ UNIT TYPE 2E - (2BR CORNER)  
38' x 14'



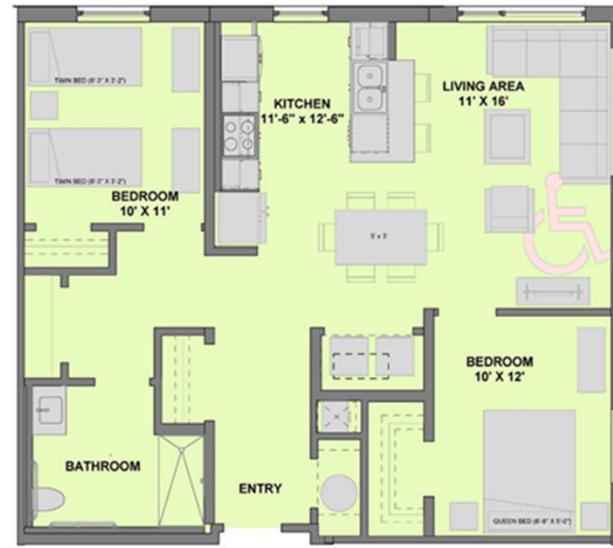
⑤ UNIT TYPE 2C  
38' x 14'

# Building E Overview + Unit Plans

*2-bedroom layouts (Slide 2 of 2)*



1 UNIT TYPE 2A - (TYPICAL 2BR)  
38' x 1'-0"

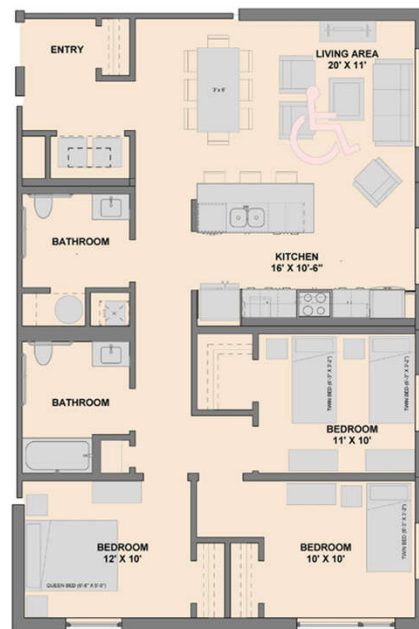


3 UNIT TYPE 2D - (2BR GROUP 2)  
38' x 1'-0"



# Building E Overview + Unit Plans

## *3-bedroom layouts*



2 UNIT TYPE 3A - (TYP. 3BR  
CORNER-GROUP 1)  
38' x 11'-0"



2 UNIT TYPE 3A - (TYP. 3BR  
CORNER-GROUP 1)  
38' x 11'-0"