



**CLARENDON RESIDENT MEETING  
SEPTEMBER 16, 2024**

# Introductions

- Interpretation Needs (In person and Virtual)
- Clarendon Residents United + Legal
- Dellbrook Construction
- Somerville Housing Authority
- Housing Opportunities Unlimited
- POAH & SCC

# Construction Updates

- Modular boxes started arriving in May, and stacking is currently up to level 4. Expected completion of stacking modules in early January.
- Larger crane is in use as of 8/19. Breaking down the crane will have the same impact to parking when stacking is complete towards the end of the project.
- Framing of the amenity space is ongoing, which includes the lobby and residential lounge, mailroom and package area, offices, and community room. Plumbing, electrical, and HVAC work in the amenity space has started.
- Residents moving into Building E will be contacted towards the end of the year to prepare for lease-up.



## Construction Timeline

- Demolition: 6 weeks (mid-May 23)
- Site & Foundations: 6 months (May-Nov 23)
- Concrete and Steel Podium: 5 months (Nov 23-April 24)
- Stacking of modular boxes: 7 months (June 24-Jan 25)
- Vertical construction: 14 months (Jan 24-March 25)
- Finish site work & landscaping: 8 months (July 24-March 25)
- Expected Completion: March 25
- Residential lease-up: 3 months (April-June 25)

## Construction Reminders

- Job applications available on the site fence
- Security cameras are live. Notices go to the construction team and police if someone trespasses
  
- Want construction updates?

Text: CLARENDONHILL  
to 8447642012 to join our list



# Re-Occupancy, Relocation, and Phase 2 Updates

- Phase 2a funding has been received!
- As we near construction completion and prepare for Phase 2a, families will either move into the new building or move off site.
- HOU is working with residents eligible for 3BR units to plan for upcoming moves.
- HOU is on site Monday - Friday 8AM to 4PM to answer any relocation questions.
- SCC will be on site September 18<sup>th</sup> 9:00 to 11:00AM.



Phase I – Under construction

Phase 2a – Construction to begin after Phase I

Phase 2b – On hold



## Re-Occupancy Overview

1. Any household relocated off-site who received a notice to quit in a no-fault eviction
2. Priority households who are currently living in Phase II and had already moved once (Phase I relocatees)
3. Priority households who moved off site
4. Priority households who remained in place in Phase II buildings (Phase II priority households)
5. Non-priority households living in Phase II
6. Non-priority households relocated off-site

# Upcoming Events

- **Next Construction Resident Meeting:**  
Monday October 28<sup>th</sup> at 6:30pm
- **HOU is on site** Monday - Friday between  
8:00AM and 4:00PM
- **SCC is on site:**
  - September 25<sup>th</sup> 9:00 to 11:00AM





# Economic Opportunity & Community Programs



**Scan this QR code for:**

- **The Fist Source Jobs Program**
- **One-on-one Financial Literacy**
- **Learn how to buy a home**
- **Digital Literacy Classes**



# Career Coaching

Somerville Community Corporation - First Source - Job Readiness Program



## Job and Resource Fair

Thursday Oct 10, 2024  
10:00 am-2:00 pm



Somerville Community Corporation - First Source - Program Preparasyon Pwa Trava



## Fwa Trabay ak Resous

Jedi 10 Oktòb, 2024  
10:00 am-2:00 pm



PREPARE  
KONEKTE  
GRANDI

Vinn jwen plis pase 30 konpayi kap bay travay ak òganizasyon kap anrichi edikasyon w.

Somerville Community Corporation - First Source - Job Readiness Program - La Fuente - Programa de Preparacion para Empleo



## Feria de Trabajo y Recursos

Jueves Oct 10, 2024  
10:00 am-2:00 pm



PREPARAR  
CONNECTAR  
CRECER

Más de 30 empleadores y organizaciones que ofrecen enriquecimiento y educación

Somerville Community Corporation - First Source - Job Readiness Program

## Job and Resource Fair

Thursday Oct 10, 2024  
10:00 am-2:00 pm



Questions? ¿Preguntas? ¿Kisyon?  
firstsourceext@somervilleccdc.org  
somervilleccdc.org/first-source-jobs-intake-form/  
(617) 410-9905  
337 Somerville Avenue, 2nd Floor Somerville, MA 02143

Register Online  
<https://www.eventbrite.com/somerville-community-corporation-fair-job-fair-tickets-1002535690117>  
OR  
Scan here to register



SOMERVILLE COMMUNITY CORPORATION

## FIRST SOURCE

PREPARASYON POU TRAVAY

Prepare - Konekte - Grandi

Nou gen devwe pou ede chak patisipan nan chèche travay, nan prepare, konekte ak ede nan kwasans pwofesyonèl yo.

## Coaches Paula, Olson y Athena

Rankontre ak caoch nou yo!



### SÈVIS NOU OFFRI...



PREPARE

Rezimè Enfòmasyon debaz

Lèt motivasyon

Preparasyon entèvyou



KONEKTE

Klas ESOL

Resous kominotè yo

Fòmasyon sou antreprenarya

Patnè nou yo



GRANDI

Kòm yon moun, kòm yon pwofesyonèl ak kòm yon manm nan kominotè a. Chak jou se yon nouvo jou pou opòtinite ak siksè.



## SAW DWE KONNEN!

Pwogram First Source ede moun ki ap chèche travay yo jwenn ladrès ak fòmasyon yo bezwen pou etabli yon karyè pwofesyonèl ki fè yo jwenn travay ki byen peye ak kwasans karyè pandan y ap bay patwon yo kandida travay ki ka lifye nan Somerville ak nan kominote vwazen yo. Nou ede moun ki pap travay ak moun ki ap travay yo simonte baryè ki genyen nan jwenn travay epi nou sipòte devlopman kompetans pou preparasyon pou travay pandan n ap vize avanse opòtinite ekonomik yo.

[somervilleccdc.org/first-source-jobs-intake-form/](https://somervilleccdc.org/first-source-jobs-intake-form/)



617-410-9905 ext 2



[firstsourceext@somervilleccdc.org](mailto:firstsourceext@somervilleccdc.org)



Adrès:  
337 Somerville Ave,  
Somerville MA 02143

# Career Coaching

**Contact us at:**

**Athena Mitchel (English)**

**[amitchell@somervillecdc.org](mailto:amitchell@somervillecdc.org)**

**Olson Regis (Haitian Creole & Spanish)**

**[oregis@somervillecdc.org](mailto:oregis@somervillecdc.org)**

**Jonathan Francisque (Haitian Creole)**

**[jfrancisque@somervillecdc.org](mailto:jfrancisque@somervillecdc.org)**

# Watch the work happen!

<https://app.oxblue.com/?openlink=poah/clarendon>



**Questions? Please contact:**

**CRU: ClarendonResidentsUnited@gmail.com**

**Developers: mmiller@poah.org or asolis@somervillecdc.org**

**Relocation Specialist: kmarsh@housingopportunities.com**

**617-344-9616**

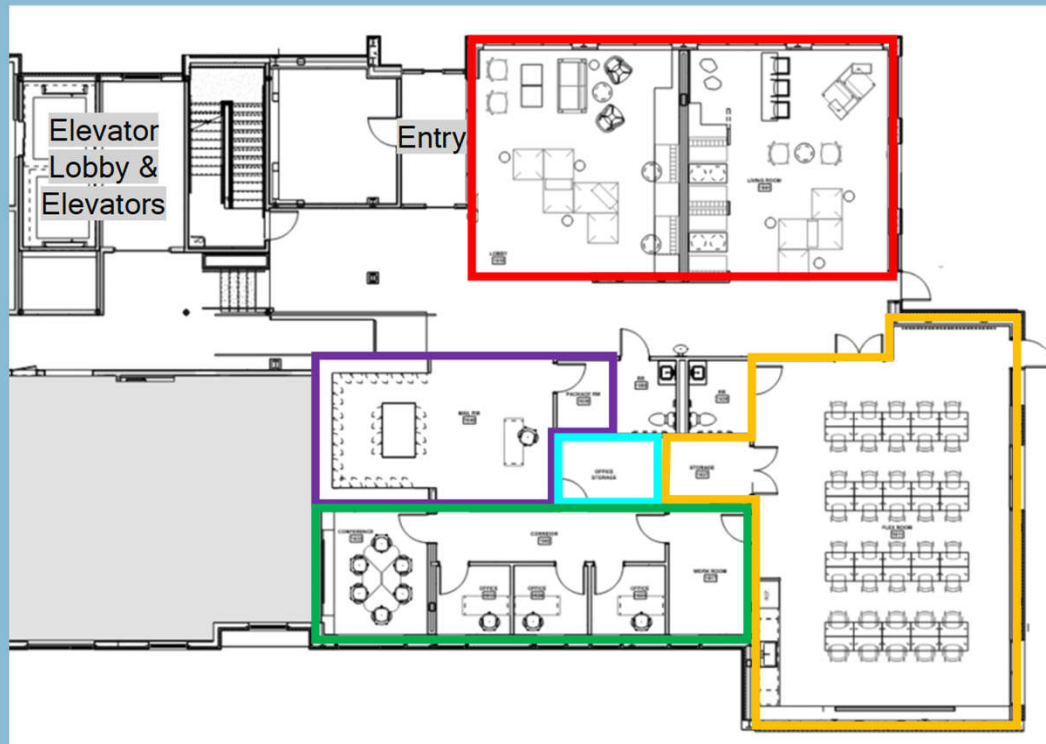
**Construction Page:**

**<https://clarendonhill.org/resident-info/construction-updates/>**

MISC./REFERENCE SLIDES



# Building E Amenity Space Overview



Lobby & Residential Lounge

Mailroom and Package Area

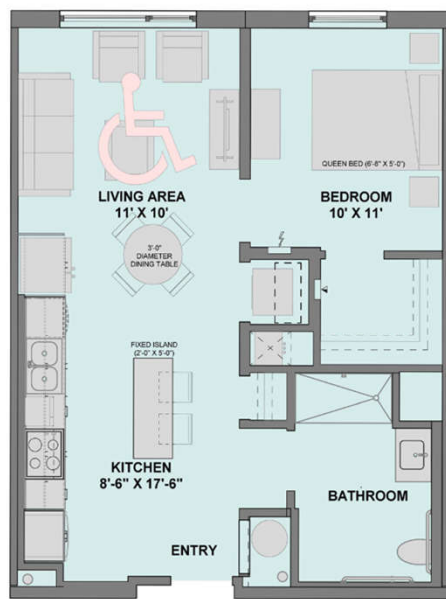
CRU Office

Management Offices

Community Room

# Building E Overview + Unit Plans

## 1-bedroom layouts



2 UNIT TYPE 1B - (1BR GROUP 2)  
3/8" = 1'-0"



1 UNIT TYPE 1A - (1BR TYP.)  
3/8" = 1'-0"

# Building E Overview + Unit Plans

*2-bedroom layouts (Slide 1 of 2)*



④ UNIT TYPE 2E - (2BR CORNER)  
38' x 14'



⑤ UNIT TYPE 2C  
38' x 14'

# Building E Overview + Unit Plans

*2-bedroom layouts (Slide 1 of 2)*



④ UNIT TYPE 2E - (2BR CORNER)  
38' x 14'



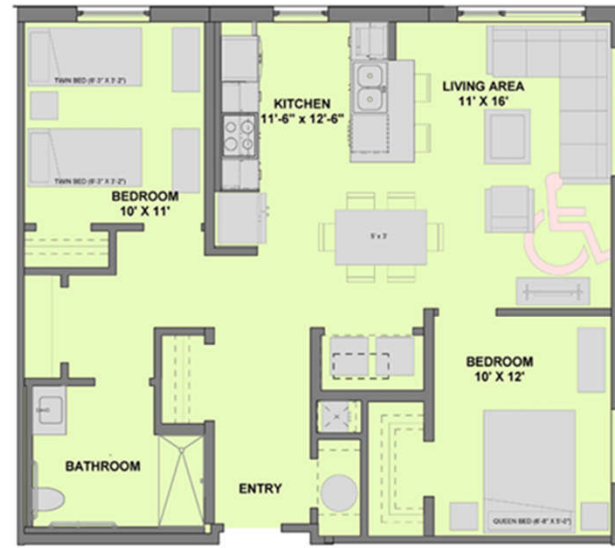
⑤ UNIT TYPE 2C  
38' x 14'

# Building E Overview + Unit Plans

*2-bedroom layouts (Slide 2 of 2)*



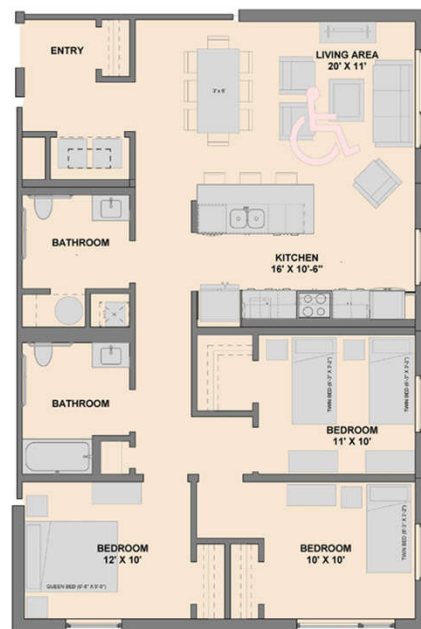
1 UNIT TYPE 2A - (TYPICAL 2BR)  
38' x 1'-0"



3 UNIT TYPE 2D - (2BR GROUP 2)  
38' x 1'-0"

# Building E Overview + Unit Plans

## *3-bedroom layouts*



2 UNIT TYPE 3A - (TYP. 3BR  
CORNER-GROUP 1)  
38' x 14'



2 UNIT TYPE 3A - (TYP. 3BR  
CORNER-GROUP 1)  
38' x 14'